



London

Javier Ramos Chamorro
Victoria Leiva Cárdenas
Pablo Merchán Berrocal

Location

- London is the capital city of England and the United Kingdom.
- It's the most populous city in the United Kingdom, with a metropolitan area of over 13 million inhabitants.
- It stands on the River Thames.
- It has 1.580 square Kilometres.
- It's the most populous municipality in the European Union.



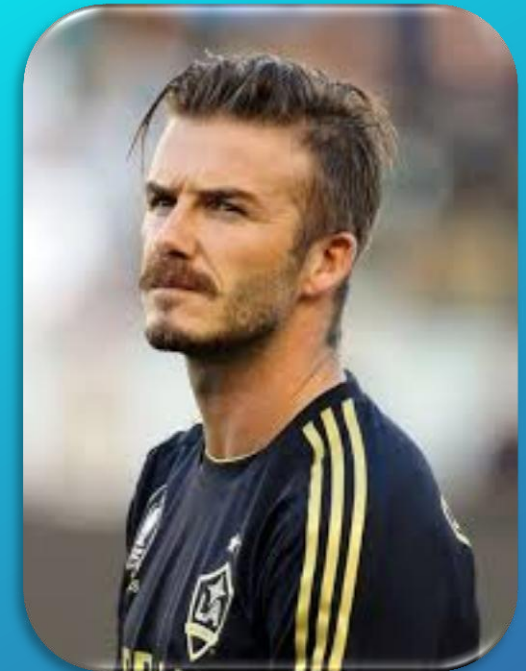
Notting Hill Carnival

- The Notting Hill Carnival is an annual event that since 1966 has taken place on the streets of Notting Hill and other nearby areas of London .
- It's celebrated three days in August.
- The carnival has attracted around one million people in the past years.



Famous people

1. One Direction or 1D.
2. David Beckham.
3. Adele.



One Direction

- They are a English-Irish popbody band based in London.
- They are Liam Payne, Harry Styles, Niall Horan, Zayn Malik and Louis Tomlison.
- One Direction represented a \$50 million bussiness empire by June 2012.



David Beckham

- **David Robert Joseph Beckham** is an English former professional footballer.
- He has played for Manchester United, Real Madrid and the England National Team.
- Beckham was the first British footballer to play 100 Champions League games.



ADELE

- Adele Laurie Blue Adkins , known simply as Adele, is an English singer and songwriter.
- She received the Brit Awards "Critics' Choice" award and won the BBC Sound of 2008.



Monuments

- 1 St Paul's Cathedral.
- 2 Buckingham Palace.
- 3 The London Eye.



St Paul's Cathedral

- St Paul's Cathedral , is an Anglican cathedral.
- It's dedicated to Paul the Apostle.
- It was the tallest building in London from 1710 to 1962.
- St Paul's is the second largest church building in the United Kingdom.



Buckingham Palace

- **Buckingham Palace** is the London main workplace of the monarchy of the United Kingdom.
- Buckingham Palace was the principal royal residence in 1837.
- Queen Victoria was the first monarch to live here.



The London Eye

- The London Eye is a giant Ferris wheel on the South Bank of the River Thames in London.
- The entire structure is 135 metres and wheel has a diameter of 120 metres.
- It is currently Europe's tallest Ferris wheel.
- It is the most popular paid tourist attraction in the United Kingdom.

